



Thule Rapid System Kit 1856

> Instructions

FIAT 500, 3-dr Hatchback, 07-/*11-

*North America

The diagram is divided into several sections:

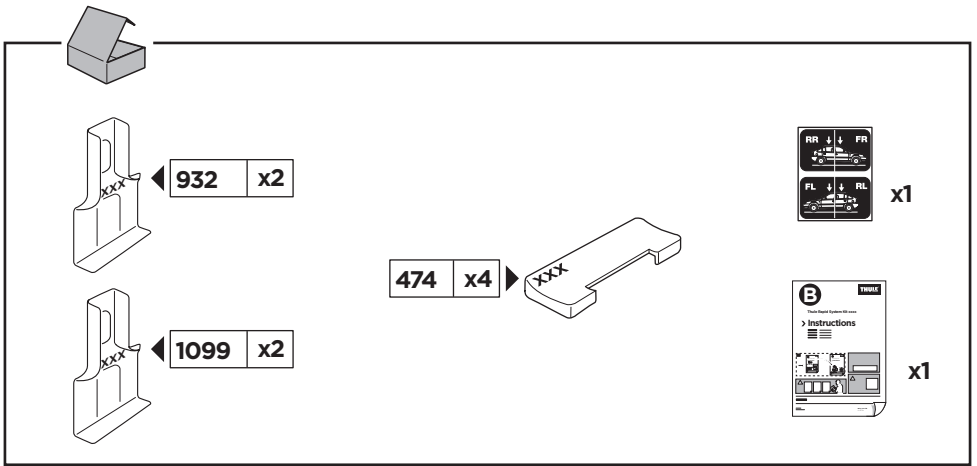
- Top Left:** A dashed box containing an information icon (i), a warning triangle, an arrow pointing to a person reading instructions, and two instruction manuals labeled 'B' (Thule Rapid System 1856) and 'A' (Thule Rapid System 754). An arrow points from manual B to manual A, and another arrow points from manual A to a car seat.
- Top Right:** A weight calculation diagram showing a bag labeled 'xx kg / xx lbs' plus a bar labeled '7 kg / 15,4 lbs' and two screws labeled '3 kg / 6,6 lbs'. Below this, a box states 'Max. 50 kg / 110 lbs'.
- Bottom Left:** A dashed box containing a warning triangle, three instruction manuals (A, B, and Security), and a person reading instructions.
- Bottom Right:** A diagram of a car with arrows indicating the roof rack installation. A speedometer graphic shows a warning triangle at 130 km/h (80 Mph) and 80 km/h (50 Mph), with a note '40 km/h (25 Mph)' below it.

ISO 11154-E

141856
C.20170516
519-1856-02

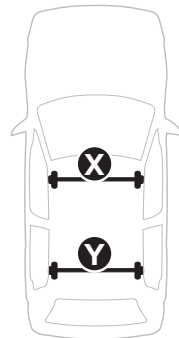
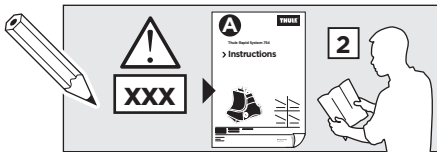
Herbály Autó www.herbalyauto.hu

Bring your life
thule.com



1

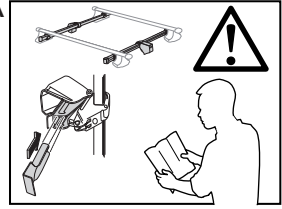
	X (scale)	X (mm)	X (inch)
FIAT 500, 3-dr Hatchback, 07-/*11-	33,5	986	38 ⁷ / ₈



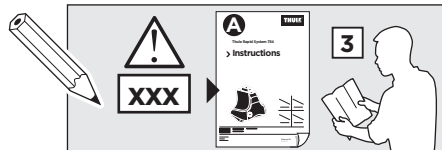
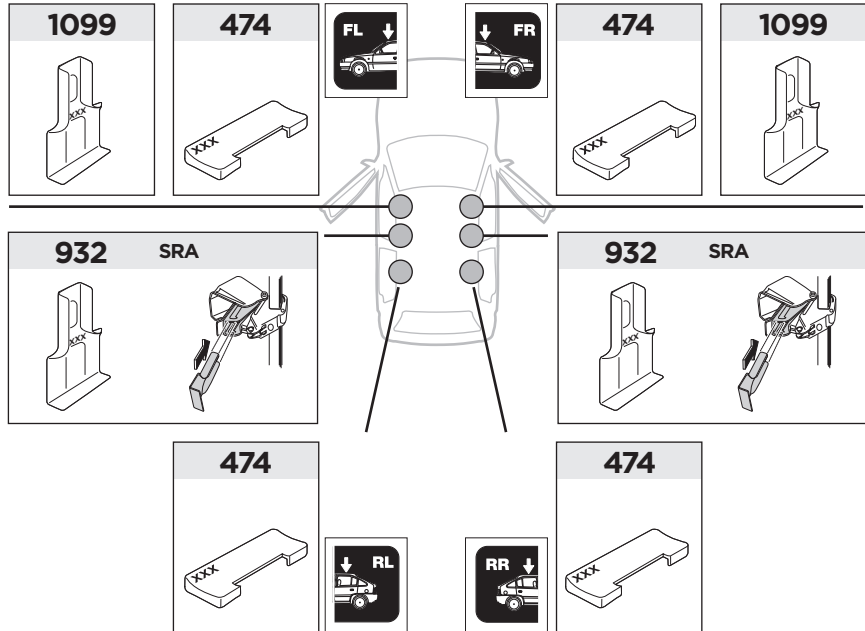
	Y (scale)	Y (mm)	Y (inch)
FIAT 500, 3-dr Hatchback, 07-/*11-	28	931	36 ⁵ / ₈

2

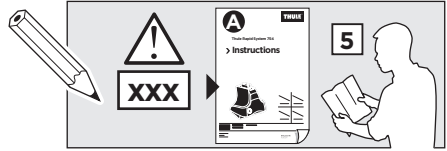
SRA



FIAT 500, 3-dr Hatchback, 07- / *11-



3



	W (mm)	Z (mm)	Y (mm)	W (inch)	Z (inch)	Y (inch)
FIAT 500, 3-dr Hatchback, 07-/*11-	250	600	270	9 7/8	23 5/8	10 5/8

